

Arizona Department of Health Services <azhealth@public.govdelivery.co... 10:03AM (5 hours ago)

to me 



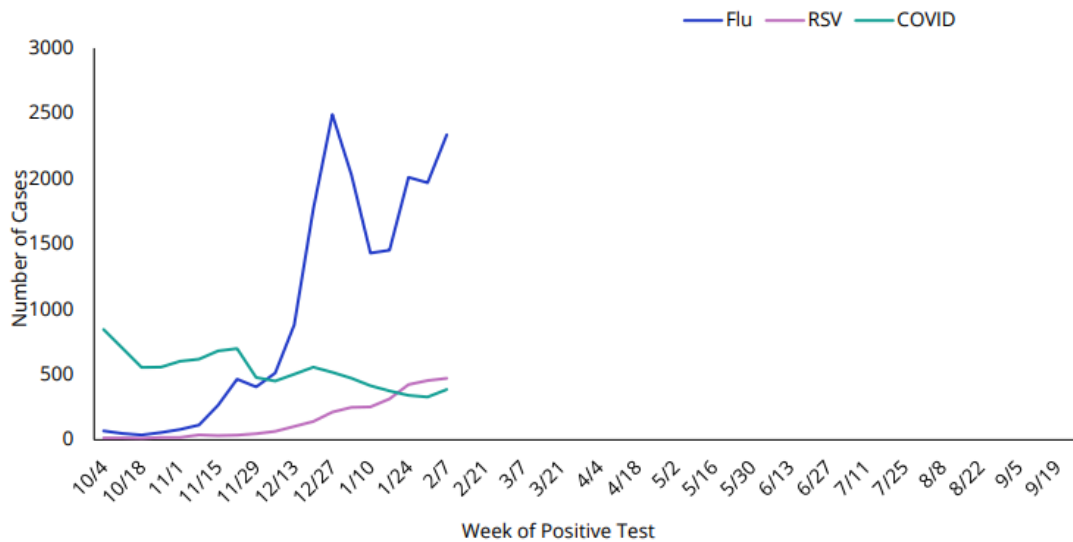
Respiratory Virus Summary: Week 5

Share your feedback! The University of Arizona is conducting two COVID-19 related studies and seeking participants ages 12+ to better understand how COVID-19 is affecting our community.

Please see the interactive respiratory dashboards: [Summary](#), [Flu](#), [RSV](#), & [COVID-19](#).

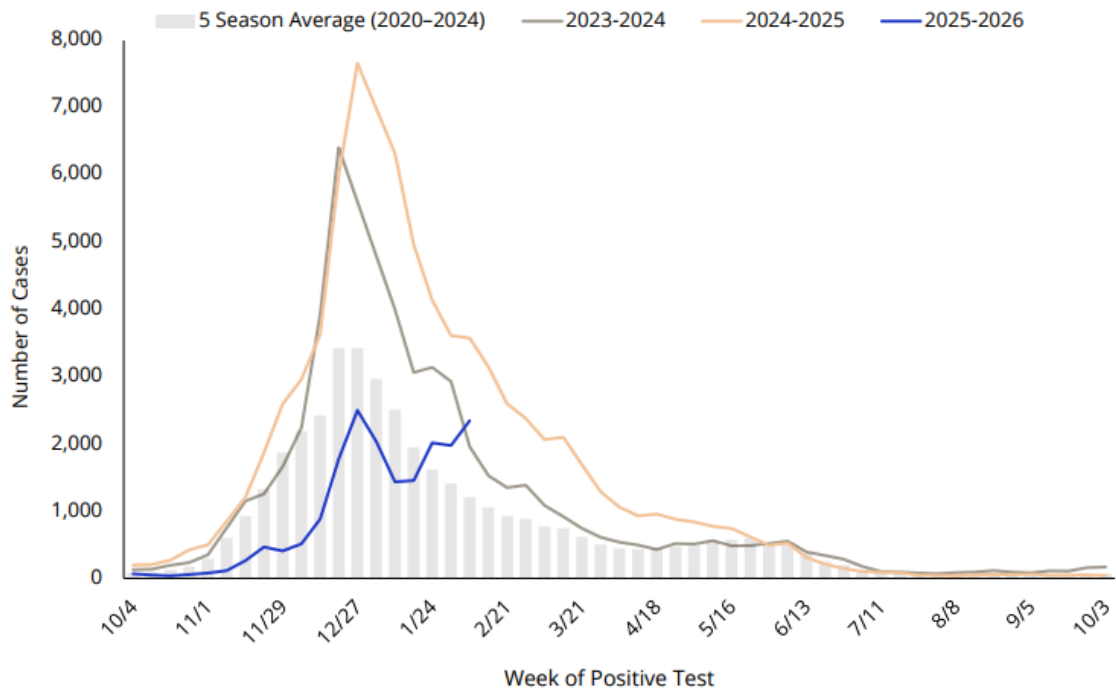
Respiratory Season Activity (Flu, RSV, COVID-19) 2025-2026

Laboratory-Confirmed Respiratory Cases



Laboratory-Confirmed Influenza Activity by Season

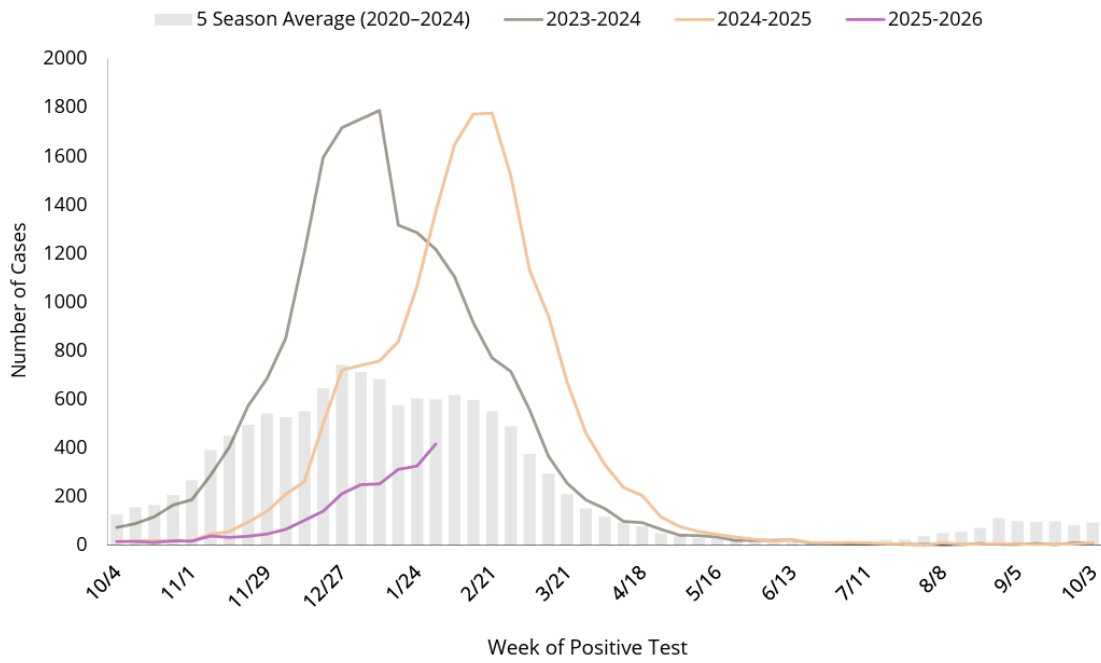
In the past week, there were **2,337 laboratory confirmed influenza cases.**



	Cumulative Season Total	Current Week Total
2025-2026	18,416	2,337
2024-2025	57,760	3,562
5 season average	28,486	1,201
% increase, compared to 2024-2025 season	-68%	-34%
% increase, compared to a typical influenza season	-35%	95%
% increase, compared to last week	15%	19%

Laboratory-Confirmed RSV Activity by Season

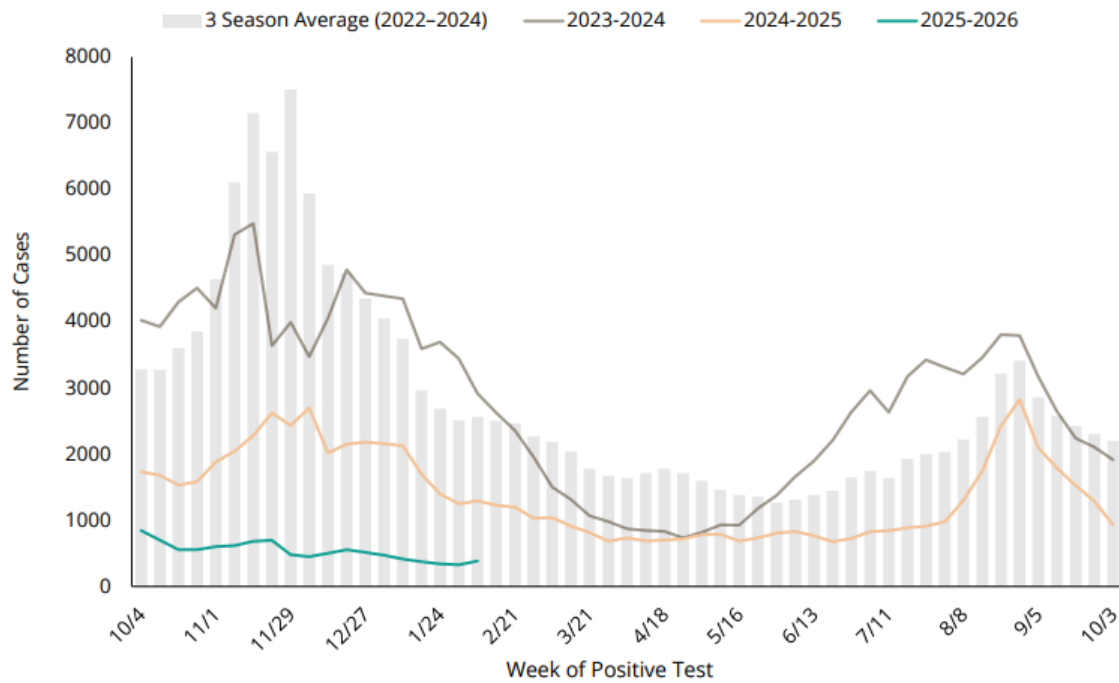
In the past week, there were **417 laboratory confirmed RSV cases**.



	Cumulative Season Total	Current Week Total
2025-2026	2,304	417
2024-2025	6,889	1,373
5 season average	8,430	599
% increase, compared to 2024-2025 season	-67%	-70%
% increase, compared to a typical influenza season	-73%	-30%
% increase, compared to last week	22%	28%

Laboratory-Confirmed COVID-19 Activity by Season

In the past week, there were 385 laboratory confirmed COVID-19 cases.



	Cumulative Season Total	Current Week Total
2025-2026	10,072	385
2024-2025	36,750	1,291
3 season average	84,359	2,565
% increase, compared to 2024-2025 season	-73%	-70%
% increase, compared to a typical season	-88%	-85%
% increase, compared to last week	14%	17%

ADHS produces weekly reports on influenza, RSV (respiratory syncytial virus), and COVID-19 to track the level of case activity, learn where the viruses are occurring in the state as well as who is affected (e.g., age), and allows us the track what sub-types of influenza and variants of COVID-19 are circulating.

For more information on these reports, visit our [Reports](#) page.

About the Data:

2025-2026 Respiratory Season: The season is defined by surveillance weeks. The first day of the 2025-2026 respiratory season was September 28, 2025, or week 40 and the 2025-2026 surveillance season will continue through October 3, 2026, or week 39.

Intensity Levels: Indicator of the intensity of flu activity in Arizona. The current season weekly case counts are classified into ranges that are calculated based on the average of the 5 previous season’s data (2020-2025).

Influenza-associated Pediatric Deaths: Influenza-associated pediatric deaths are reportable to the public health departments in Arizona. The 2008-2009 and 2009-2010 seasons showed an increase in influenza-associated deaths in children related

to the circulation of the 2009 H1N1 strain. Zero to eight deaths were reported in each of the other seasons since 2004.

Influenza-like illness: Defined as a fever of at least 100°F plus cough and/or sore throat. In weeks when a relatively low number of enrolled facilities report data, the ILI proportion may not be as representative of Arizona activity as for other weeks. For the 2025-2026 season, the state ILI baseline is 1.6% and the epidemic threshold is 3.0%. Because of the non-specific symptoms of ILI, multiple viruses, including COVID-19, may impact the percentages.

About us:

The award-winning, nationally recognized Arizona Department of Health Services is responsible for leading Arizona's public health system including responding to disease outbreaks, licensing health and childcare facilities, operating the Arizona State Hospital, and improving the overall health and wellness of all Arizonans.

Stay connected with us:



Subscriber Services:

[Manage Subscriptions](#) | [Unsubscribe All](#) | [Help](#)

